

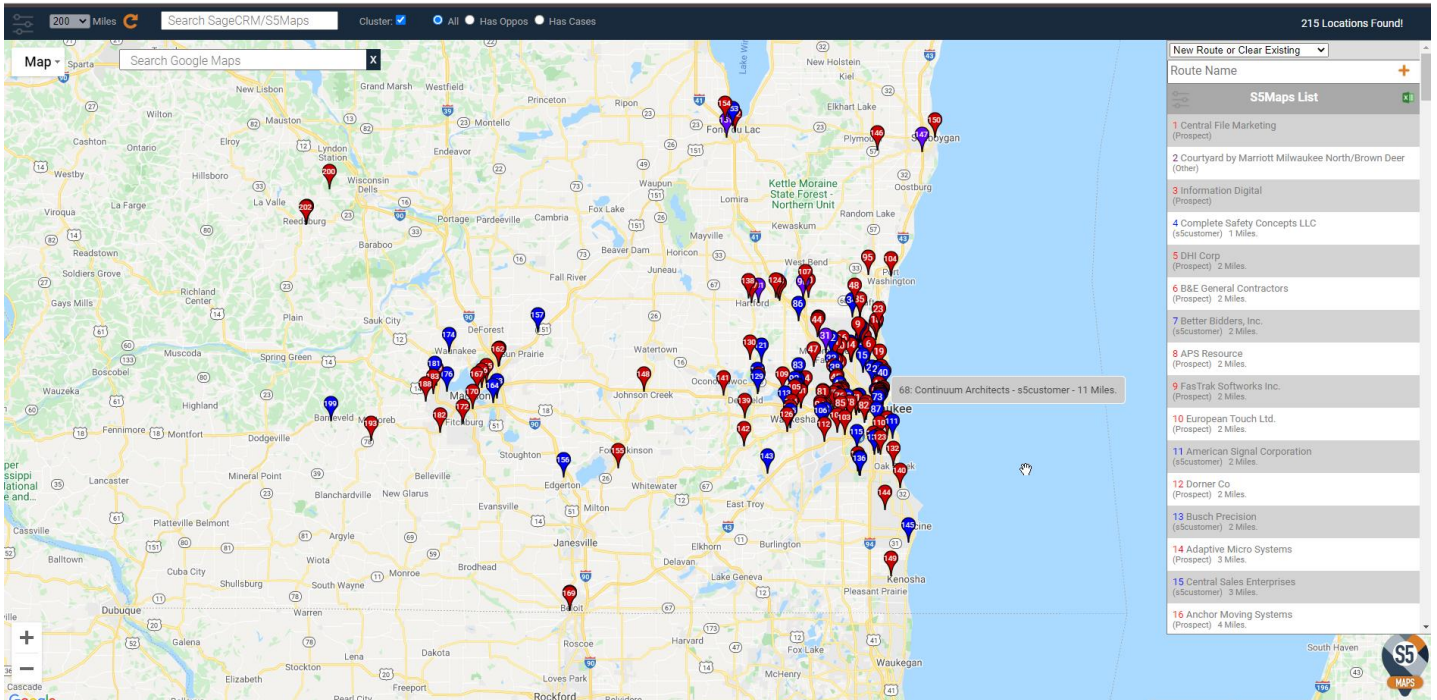


S5Maps - Google Maps Integration for SageCRM – Base Module

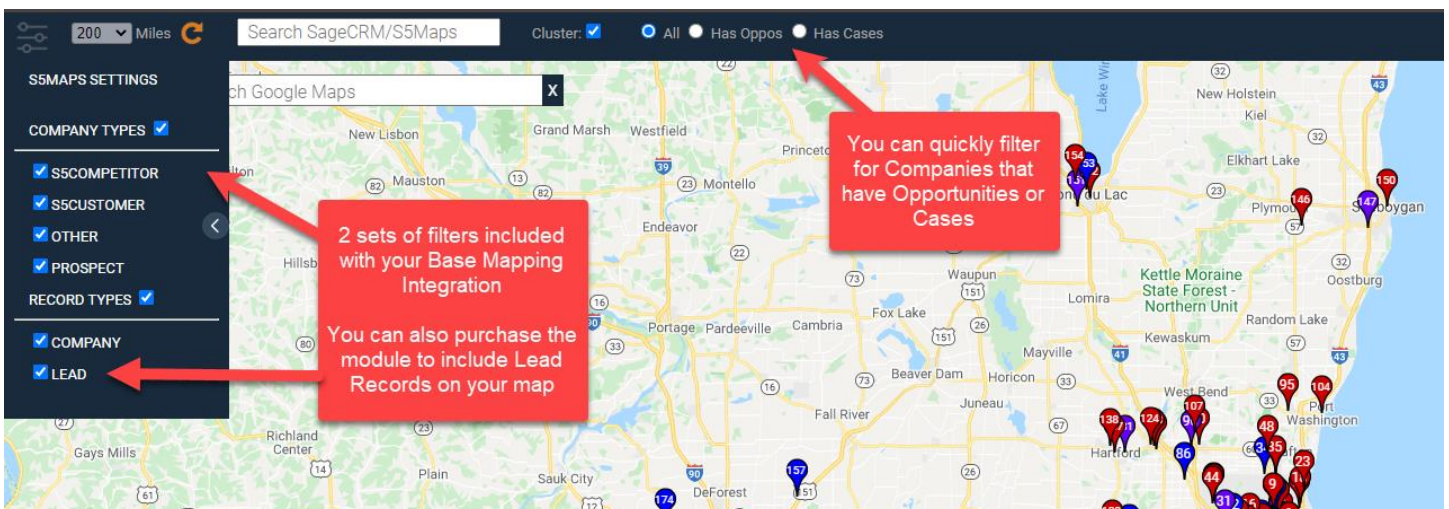
Brought to you by S5CRM and Effective Solutions

Base Mapping Integration

Display your SageCRM Company records on a map within SageCRM. Pull up a company in SageCRM and then click on the S5Maps button and it will open up a Google Maps window in another tab. The current company will be displayed as the center point on the map and show you all of the other CRM companies in the area. Different color pins can be set to differentiate between Customers, Prospects, etc. on the map.

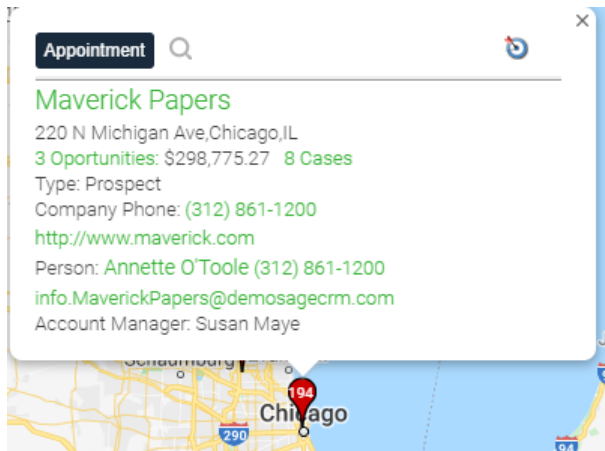


Map Filters: 2 sets of filters are also included with the base mapping application. So you can filter the map based on 2 different company fields in SageCRM. You can also filter for records that have Opportunities or Cases. If you need to see Lead records on your map, we have an addon module for that as well.



Pinpoint Information and Functionality:

When you click on a pinpoint on the map it will display information from the record in SageCRM. We can customize the information that you would like to appear in this popup window. You also have additional functionality built into the popup window:



If you click on the Company or Person name it will jump you to that record in SageCRM

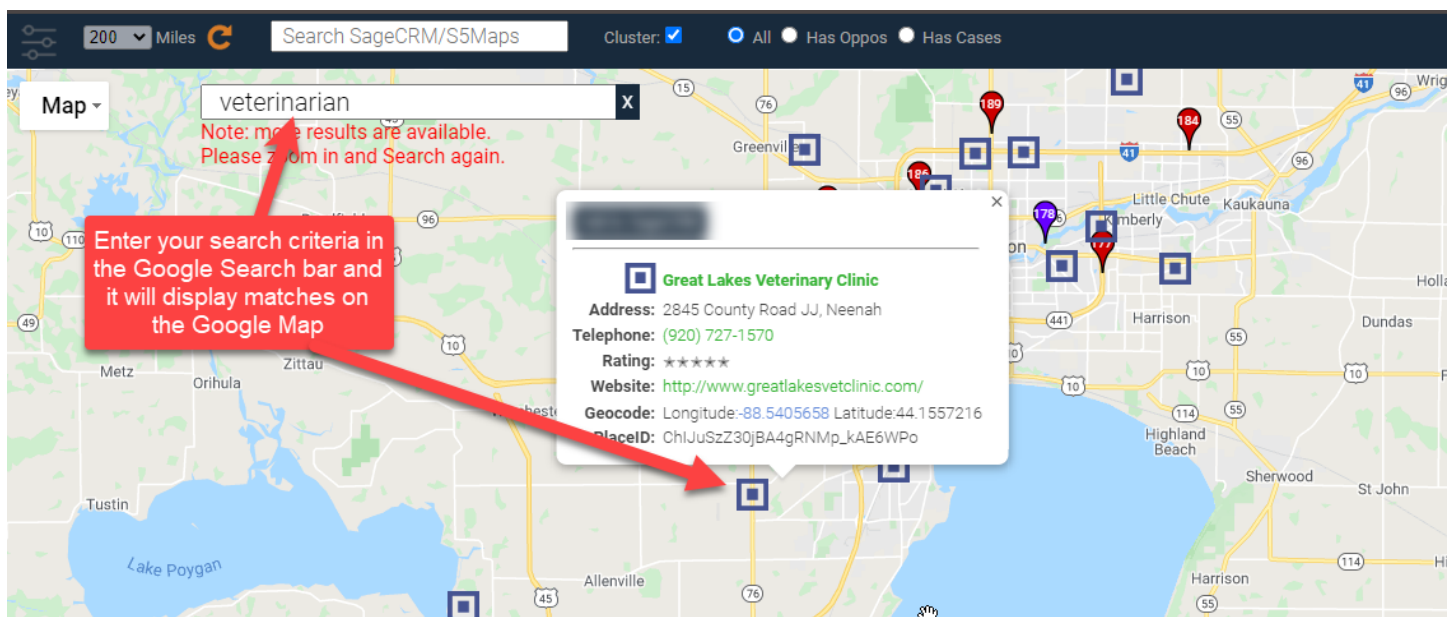
If you click on the Opportunities or Cases it will take you to that list in SageCRM for the designated company

Click on the Appointment button to create an appointment in SageCRM for this company

Click on the Bullseye icon and it will make this company the center point on the map

Search for leads in Google Maps:

You can do a google search within the map application to look for companies that may not be in your SageCRM database. This is a great way to identify new leads in the area.



Base Google Maps Integration Pricing

Base Google Mapping Functionality

- Display your SageCRM Company records on a Google map as pinpoints
- Initiate the map from within SageCRM using the S5 Maps button
- Different color pins can be set to differentiate between Customers, Prospects, etc. on the map
- 2 sets of filters are also included with the base mapping application, so you can filter the map based on 2 different company fields. Additional filters can be implemented, but there will be an additional charge for that custom programming.
- When you click on a pinpoint on the map it will display information from the record in CRM. The fields displayed can be adjusted.
- New records added to SageCRM are automatically geocoded
- When you purchase the Base Mapping Integration all SageCRM users will have access to the functionality. Provides you with an unlimited user license to this functionality.

Initial Fees

- \$2,400 Initial Year Subscription paid annually (unlimited users)
 - o Includes software updates and bug fixes
 - o Includes updates to correspond with newer versions of SageCRM
 - o Includes updates to correspond with changes the Google may make to API integration
- Initial Setup and Geocoding Fee: \$1,000 for the mapping application to be installed and for the first 5,000 company records that need to be Geocoded. \$500 for each additional 5,000 records that need geocoding. Geocoding converts an address to a Latitude and Longitude value so it can be mapped
- Initial 1-hour Mapping App training session is included with your purchase

Initial Upfront Investment = \$3,400 + any additional Geocoding services beyond 5,000 records

Annual Fees moving forward

- \$2,400 per year for annual subscription fee (unlimited users)
 - o Covers software updates and bug fixes
 - o Covers updates to correspond with newer version of SageCRM
 - o Includes updates to correspond with changes the Google may make to API integration
- Customers need to be current with maintenance. Google Maps add-on product won't work if you let your subscription expire

Google API Key will need to be acquired

- Your Google Maps integration with SageCRM requires a separate API key from Google
- We will work with you to get you to get your Company API key acquired
- There are thresholds that may generate some API key charges directly from Google, but the thresholds are so large that any charges would be rare. [Here is a link to the current API pricing chart](#)

** Additional and Future customization requests to your Base Google map integration are not included in your maintenance. Price quotes will be provided for any customizations above and beyond the base mapping functionality.